

Period Embossed Victorian Tiles

Product Catalogue



H&E SMITH

About H&E Smith

Specialist Tile Manufacturers and
Distributors Since 1926



Our **Period Embossed Tiles** and **Eco-Glazed Brick Slips**, all made on site, are our most popular selling lines, often used to create feature walls in bars, clubs, restaurants, hotels, and retail outlets.

Our experience with the bespoke manufacture of ceramics has greatly enhanced our ability to be able to work closely and effectively with architects, designers and specifiers.

This has culminated in our large collection of clients that we now supply throughout the world, both in the fashion and hospitality sectors.

As designers and creators of ceramics, we are passionate to explore new horizons with materials, colours and textures. These are reflected in our comprehensive product ranges.

Our range of modern ceramic Period Embossed tiles for walls offer a choice of colours incorporating a series of elegant cornices and mouldings. This period range, evoking classic 19th Century designs is complemented by a functional and smart selection of solid glazed ceramic corner fittings to match the field tiles.

Samples can be ordered
through our **website** and
dispatched within hours.



Period Embossed

Colours - Page 1

25+
Colors



Magnolia



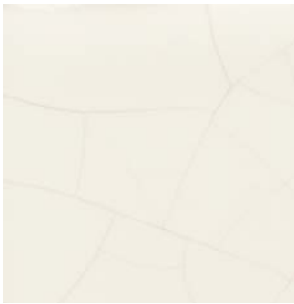
Primrose



Polished White



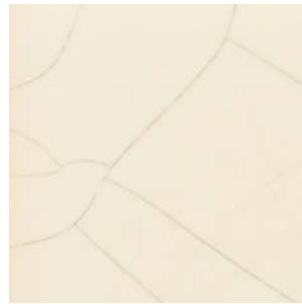
Snow Drop



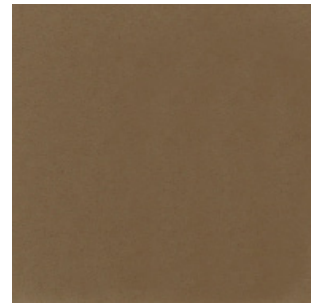
Crackle Snow Drop



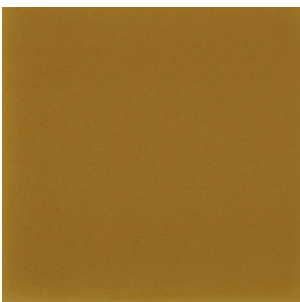
Off White



Crackle Off White



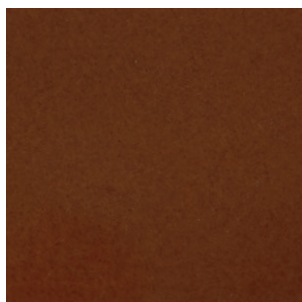
Mocha



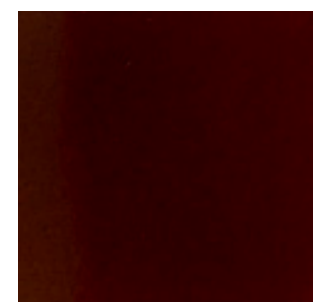
Inca Gold



Honey

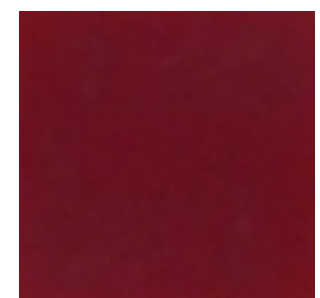


Victorian Brown

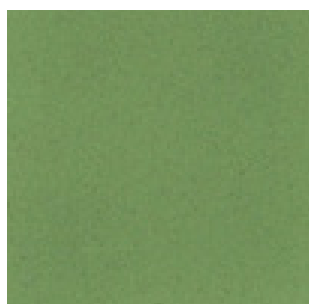


Tea Pot Brown

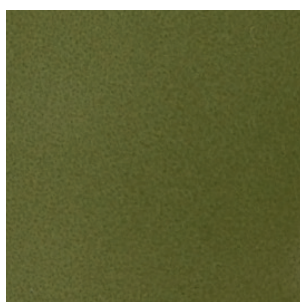
Please note that these colour swatches may vary in colour depending on light and your PC display settings. Crackle designs have a pigment applied to highlight the crackle effect. For a true representation of colour, please order a sample.



Burgundy



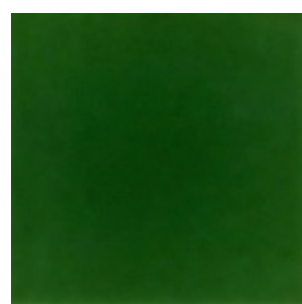
Apple



Celadon



Jade



Victorian Green



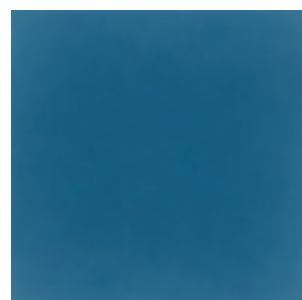
Teal



Periwinkle



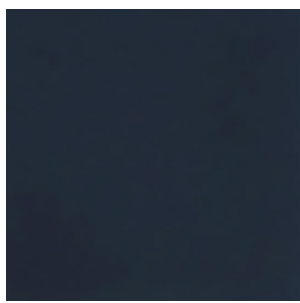
Moonstone



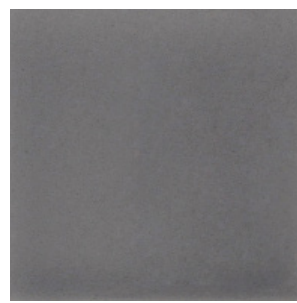
Bluebell



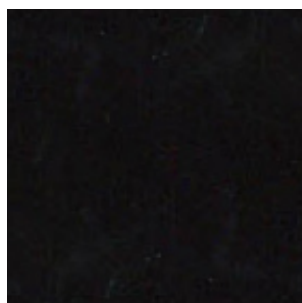
Cobalt



Midnight Blue



Victorian Grey



Victorian Black

25 Standard colours are available, however almost any colour from the RAL selector or Pantone colour finder can be applied if required.

* Please note that not all tiles are available in every colour

Period Embossed

Tile Designs

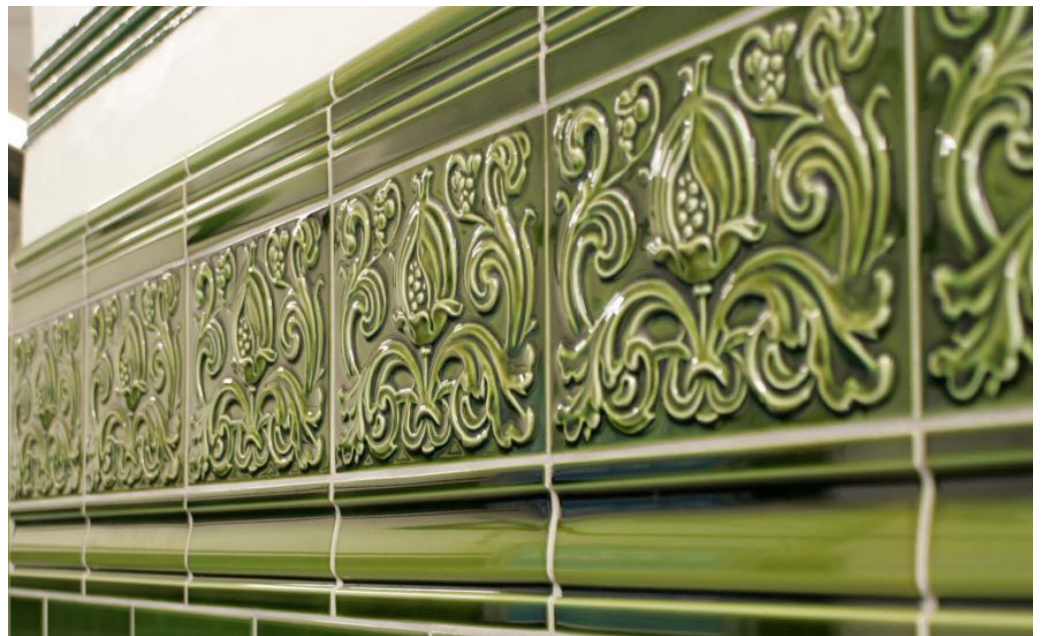
20
Designs

Available tile, cornice and moulding designs



Pomegranate 9"x6"

The Pomegranate tile was originally designed so the fruit hangs down, however many designers prefer it to face upwards.





Floral 9"x6"

1871 Bar - Below is a great example of where both the Floral and Pomegranate tile have been used to create a stunning bar frontage, full of colour, shine and texture.

Renovation Works by CJC Design



[Click here to see more finished projects on our website.](#)



Royal Windsor Quarter 6"x6"



This Royal Windsor Quarter tile is designed to be laid out in fours to create this beautiful flower pattern as seen here to the right.

Medalion 6"x6"

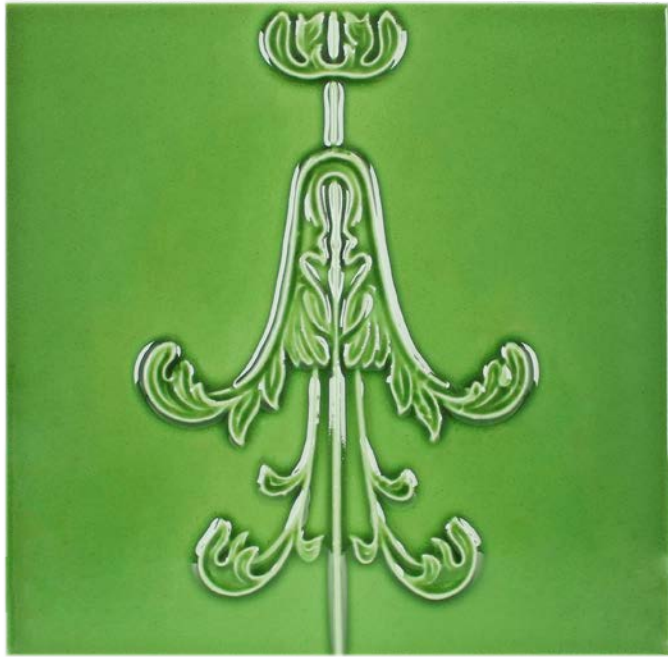


Garland Border 6"x6"

Imperial 6"x6"

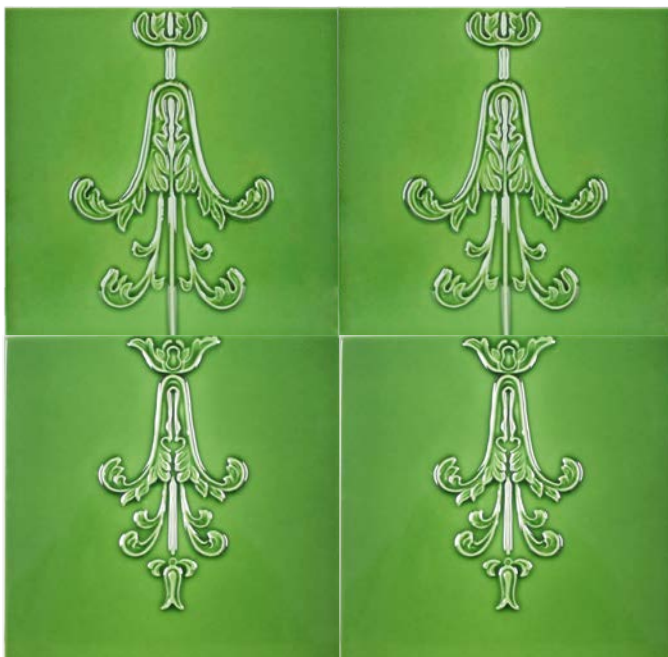


Rosette
Border 6"x4"



Minor Pendant
Dropper 6"x6"

Minor Pendant 6"x6"



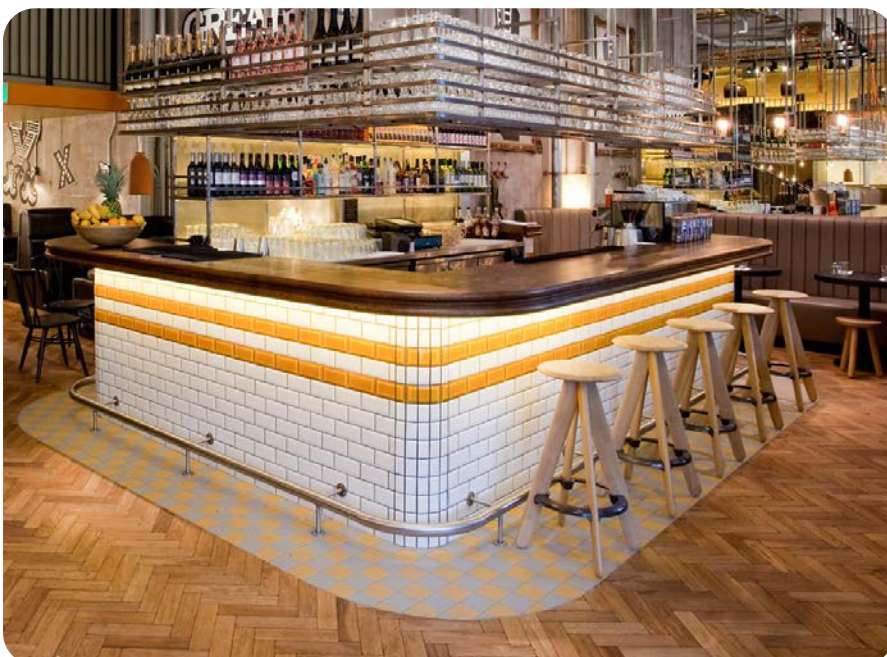
The Minor Pendant and Minor
Pendant Dropper tiles have
been designed to be laid one
on top of the other to create
a continuing pattern as seen
here to the left.



Metro 75 x 75mm



Metro 150 x 75mm



Giraffe restaurant used metro tiles to create a really distinctive bar area.

Angular, bevelled edges catch light from all directions and throw extra attention on the areas of a room intended to be the centres of interest.



Plain 6"x6"

Plain 8"x4"



Plain 9"x3"

Our plain tiles form the core of many wall designs, used to showcase the embossed tiles and borders or simply to create a stylish and glossy design on their own.

Plain tiles are available in the following size options:

4"x4"/ 6"x1"/ 6"x1.5"/ 6"x2"/ 6"x3"/ 6"x6"/ 8"x4"/9"x3"/ 9"x6"

Dados & Borders

Available fittings



Wheat Sheaf 6"x3"

Royal Garland Dado
6"x3"



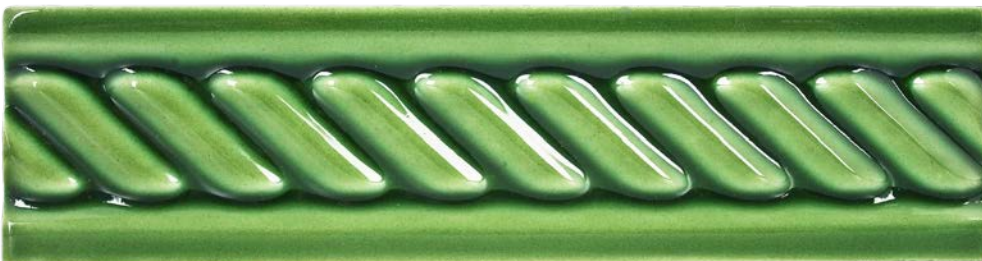
Dados and borders can provide striking detail to tiled walls, choose one or stack them up for maximum impact.

Location: Kew Gardens
Image: Andy Marshall
Architect: Acanthus Clews Architects



Thistle 6"x3"

Leaf 6"x3"



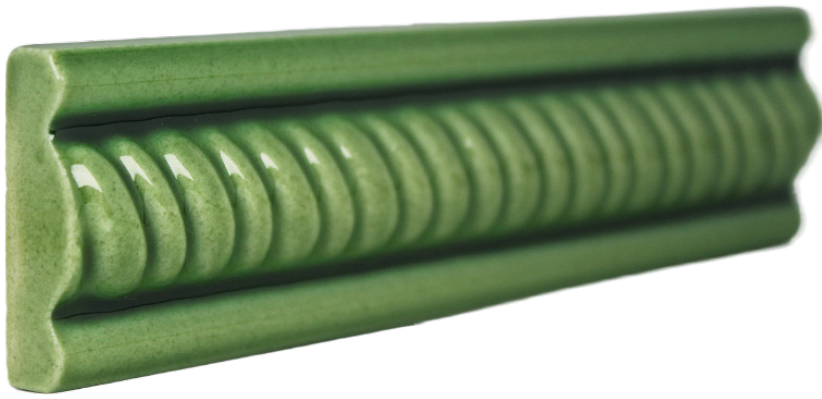
Cable 6"x1.5"

Crown 6"x1.5"



Dentil 8"





Rope 6"x1.5"



Lozenge 6"x1"



Georgian Dado 6"x3"

Edwardian Dado
6"x3"



Dado 9"x2"



Fluted Dado 9"x3"



Classic Moulding
6"x3"

Skirtings



Fluted Skirting 9"x3"



Skirting 6"x6"

Available corner fittings



Cable Corner 1.5"



Crown Corner 1.5"



Georgian Corner 3"



Thistle Corner 3"



Leaf Corner 3"



Classic Corner 3"



Fluted Dado Corner 3"



Fluted Skirting
Corner 3"



Royal Garland
Dado Corner 3"



Straight Corner 6"



Quad Corner 6 x 1/6 x 2"



Skirting Corner 6"



Quadrant Corner 4.5" x 3"

Sample Requests

If you are an architect, designer or specifier working on a project and something has caught your eye, please get in touch and request a free cut sample/s to determine your colour choice. **Click here to order your samples online.**

If you would prefer to purchase any full size tiles, mouldings or fittings in a particular colour, then send your order through to sales@hesmith.co.uk and we will review availability and provide a quote.



Call:
[01782 281617](tel:01782 281617)

Email:
sales@hesmith.co.uk

Web:
www.hesmith.co.uk

If you are an architect or specifier working on a project, please contact us to request your free samples.



H&E SMITH

Specialist Tile Manufacturers
& Distributors Since 1926

The beauty, grace and elegance of a traditionally crafted tile is an
inspiration that helps create truly wonderful things.

www.hesmith.co.uk